



PELENDRI-LIMASSOL

Students : Mamadou Lamarana BAH – Enora NICOLAS – George VESSIARIS

Professor : Maria PHILOKYPROU

Choice of village

According to the course procedure (vernacular architecture), we had to choose a locality in Cyprus to analyze and then, more specifically, a house in this locality to renovate while respecting the principles of vernacular architecture.

Thus, the locality of Pelendri in Limassol has its unique characteristics: a village that coexists with the river and mountainous, narrow, deep valleys, and loom tall peaks, and its igneous rock drew our (group) attention to explore.



Choice of house

This house is a contiguous house on its top, built with local materials such as igneous rock and bricks, and has its roof renovated in concrete to serve as a terrace for the contiguous house on top of it.

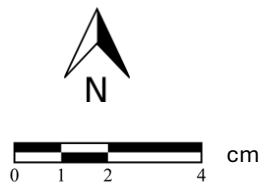
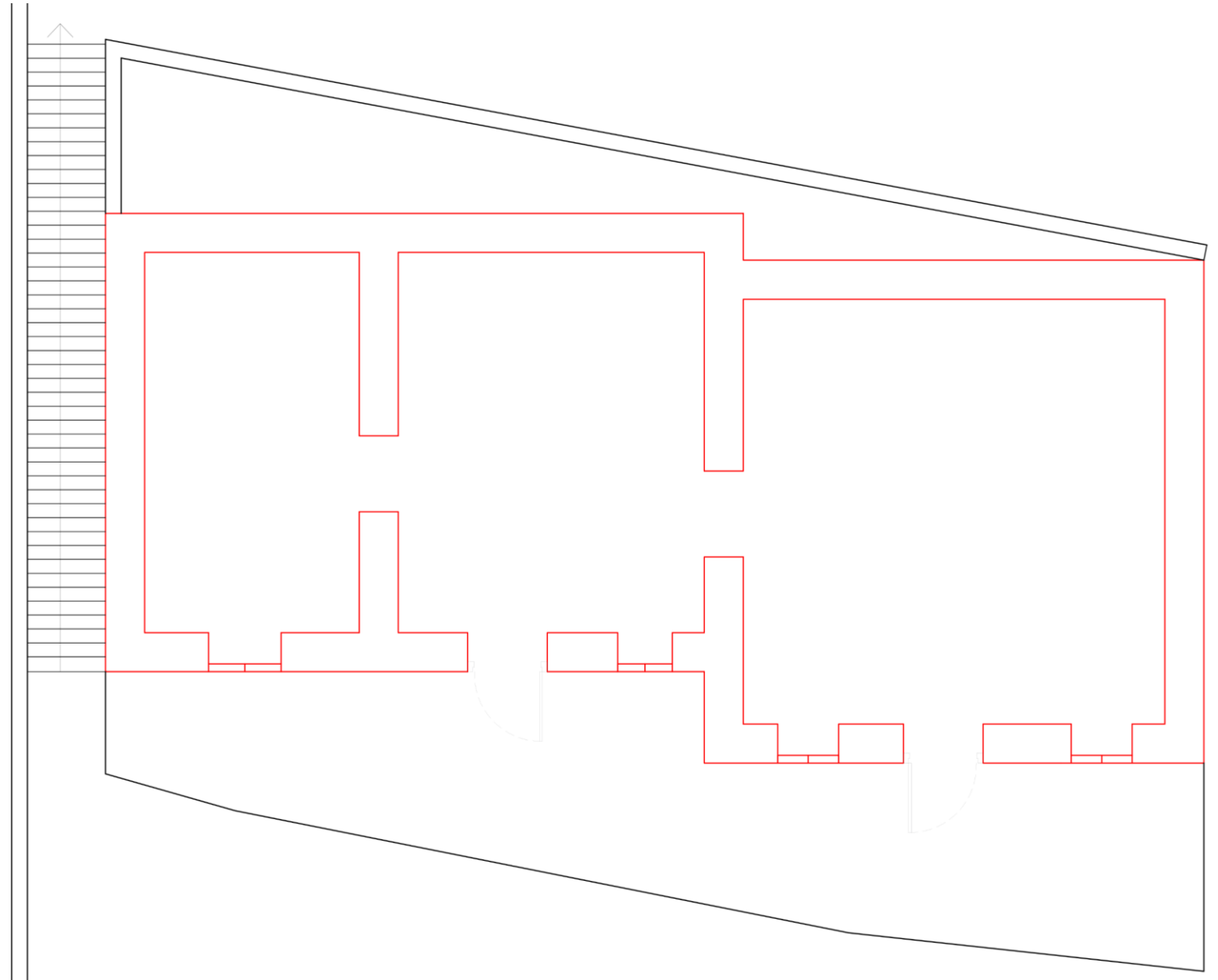
The house occupies less than 1/3 of the area of the plot with a traditional oven, which gives more empty spaces in the front.

Our group aimed to not only renovate the house but also revive the village's cultural activities, like the oven, for gathering spaces for the community to meet up, while preserving the privacy of the residents of the house and providing more accessible parking and access.



Plan- existing

The plan was originally designed for 2 big spaces(Dichoro) and one small one(Makrinari) with a void to the opposite side of the entrance, with a small communal terrace, having the stairs on the left(access for the contiguous house on its top)



Section-existing

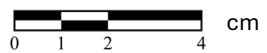
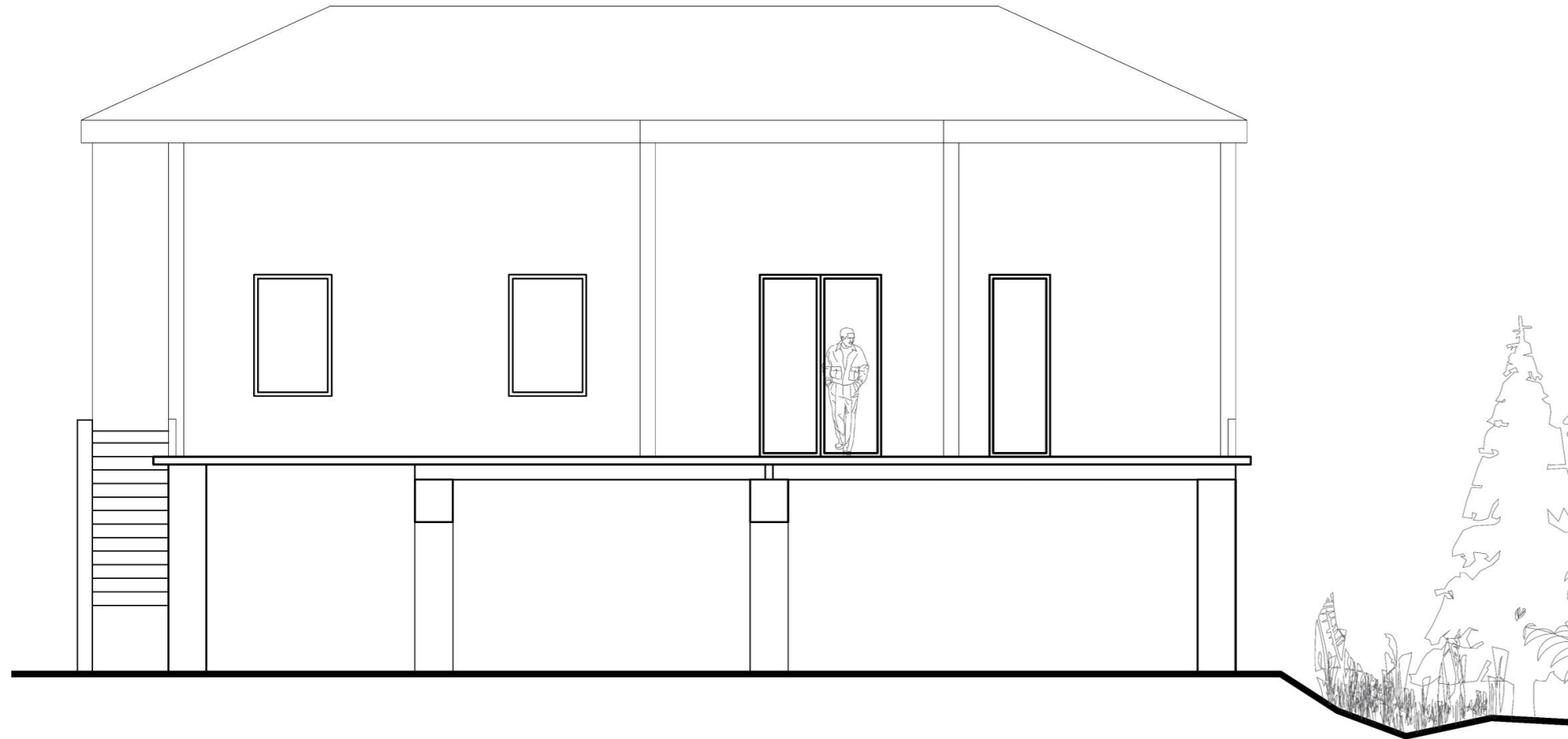
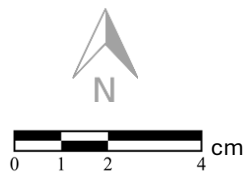
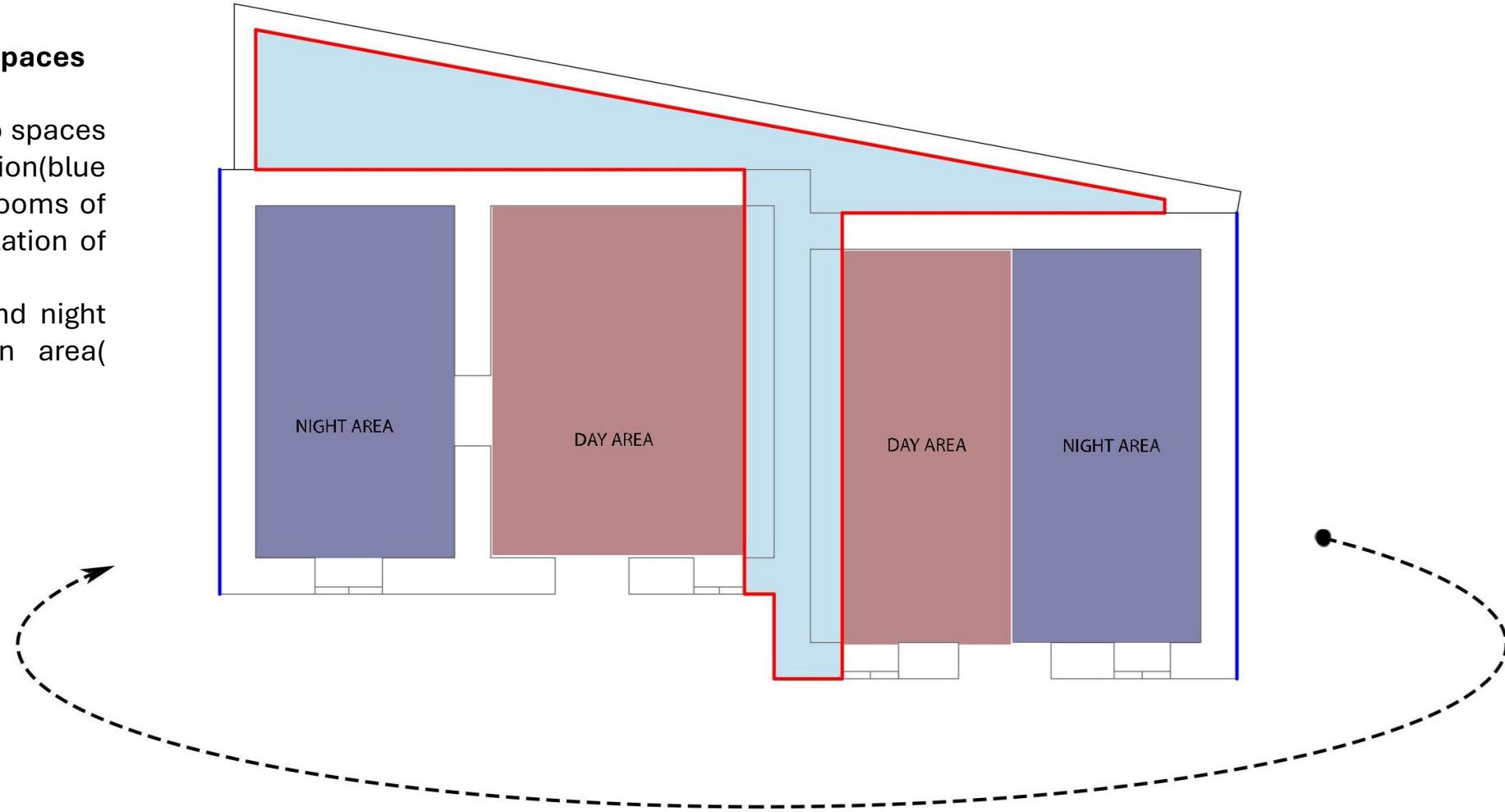


Diagram of the organization of spaces

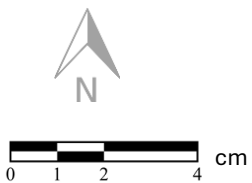
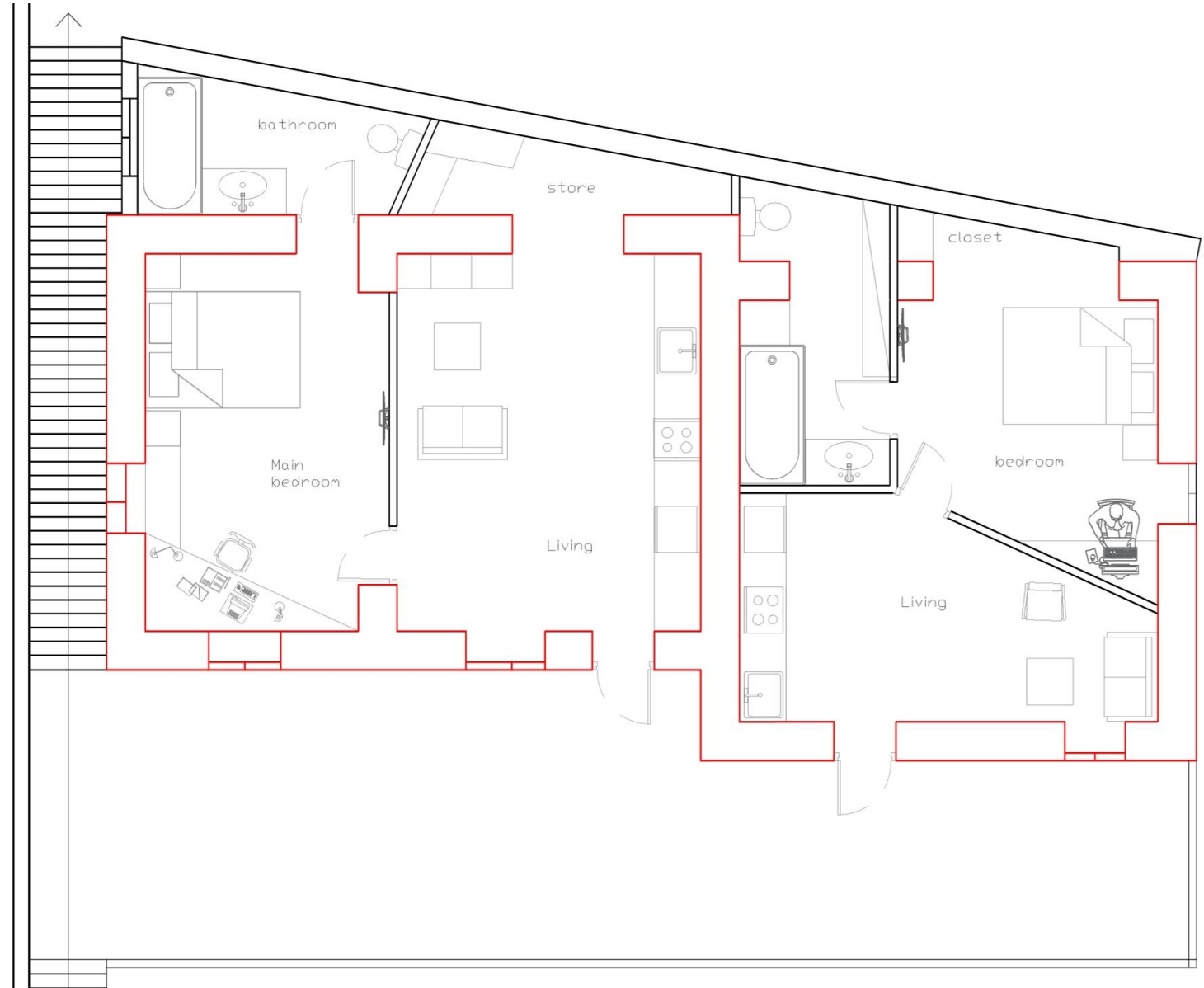
We renovated the house into two spaces while keeping a central organization (blue light) for the kitchens and bathrooms of both spaces for an easy canalization of water.

Every space has its own day and night area, while having a common area (terrace) to the front.

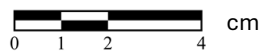


Plan-Proposal

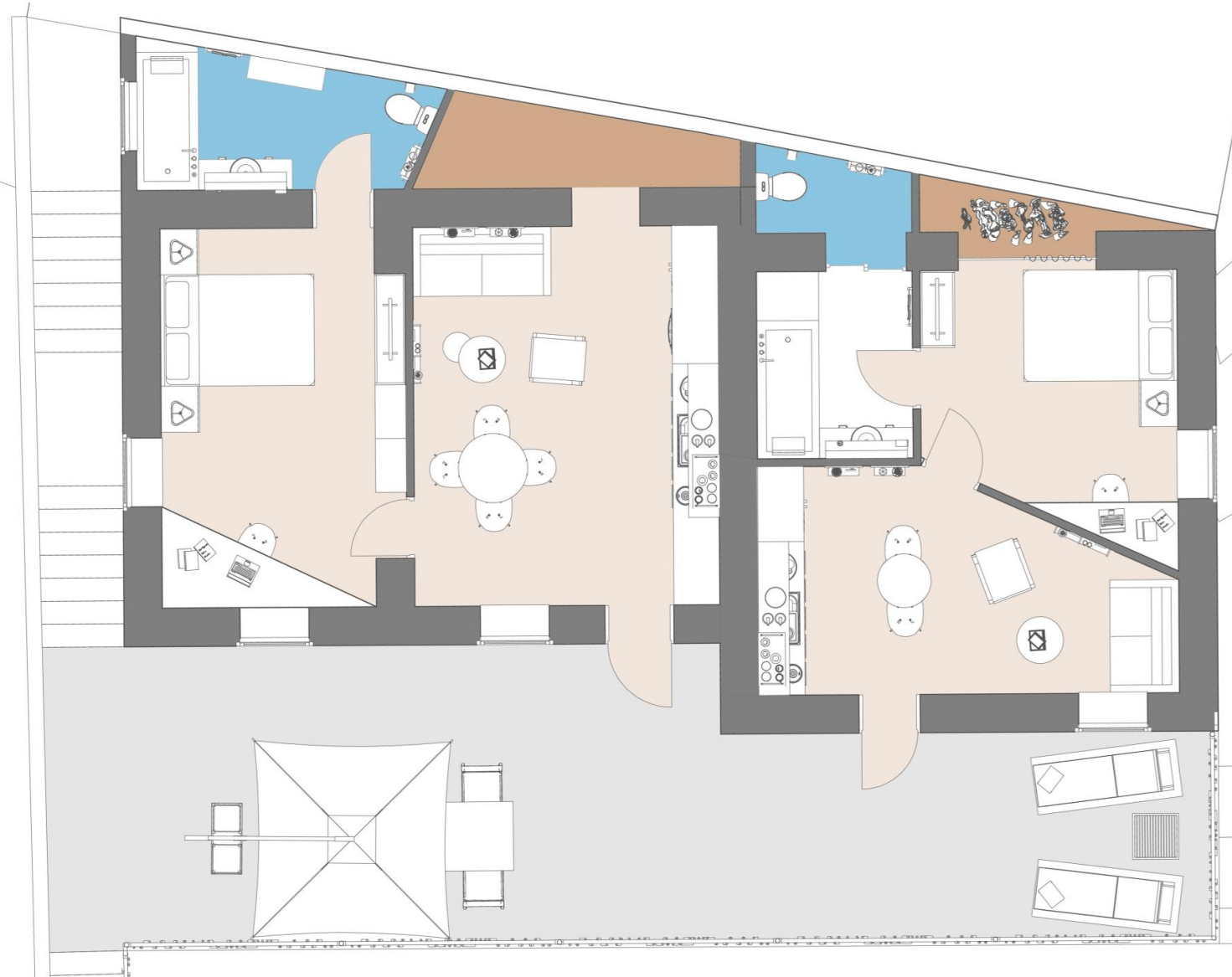
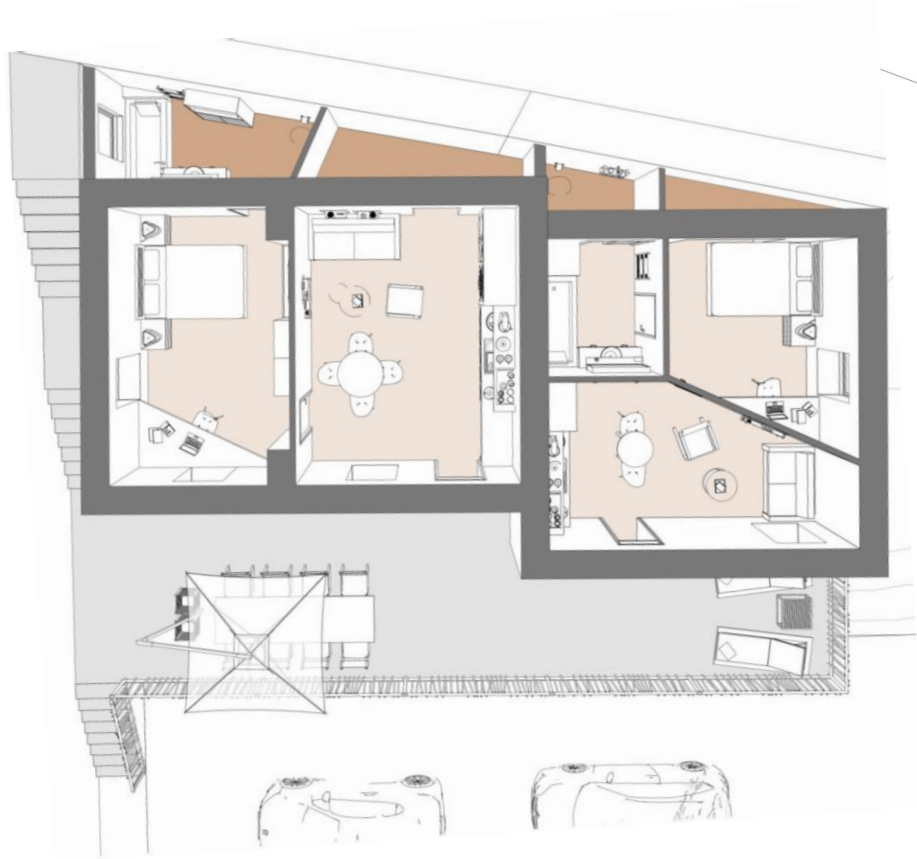
-The red lines(existing), black(renovation)-the inclined wall used for the renovation of the house was inspired by the topography and the irregular shape of the plot.
 -In every space, we have a living area at the entrance and a night area at the rear with an office, a bathroom, and a window which gives more natural light to the space



View-Proposal



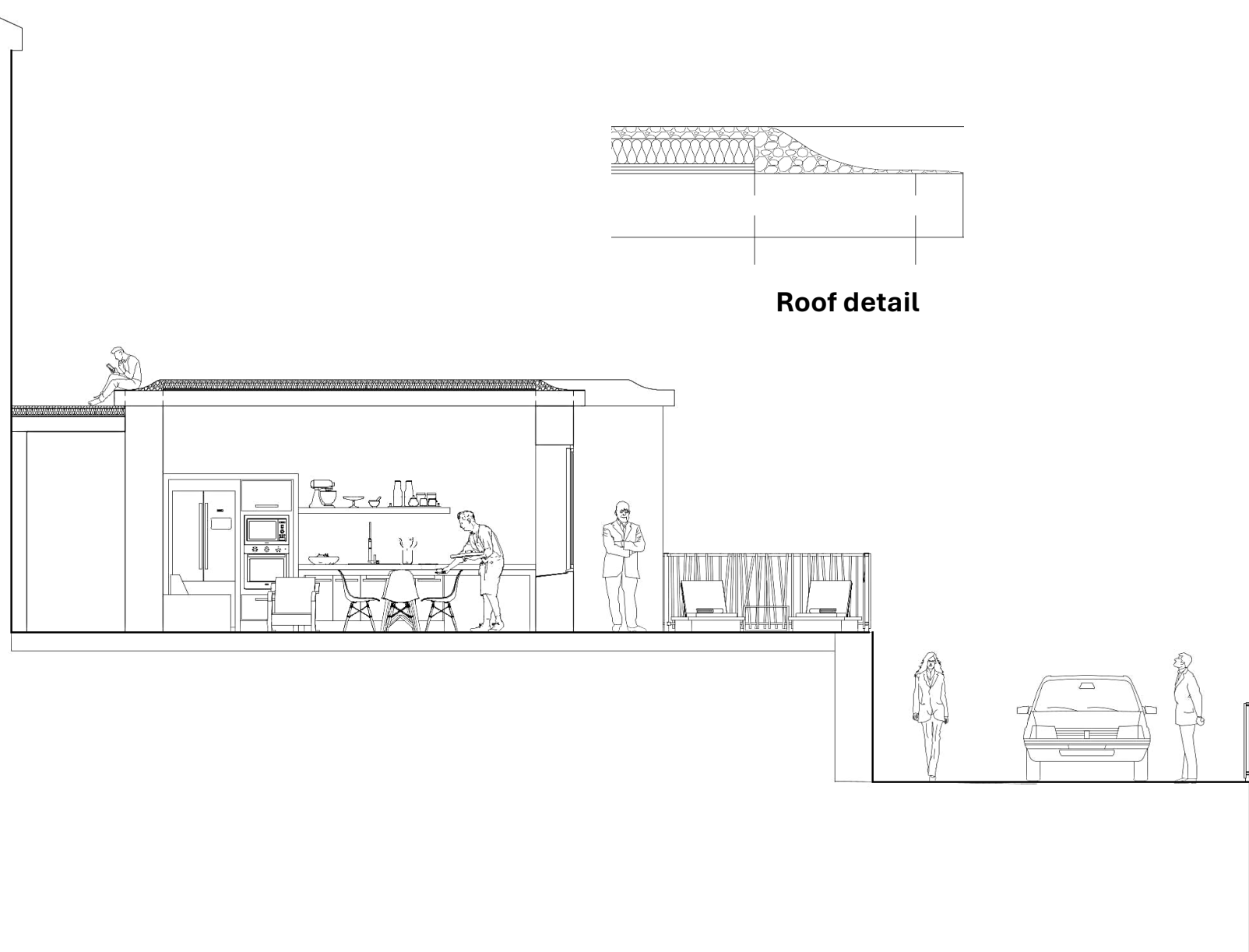
Renovation Plan



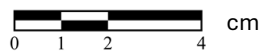
Section 1 -Proposal



terrasse



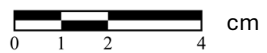
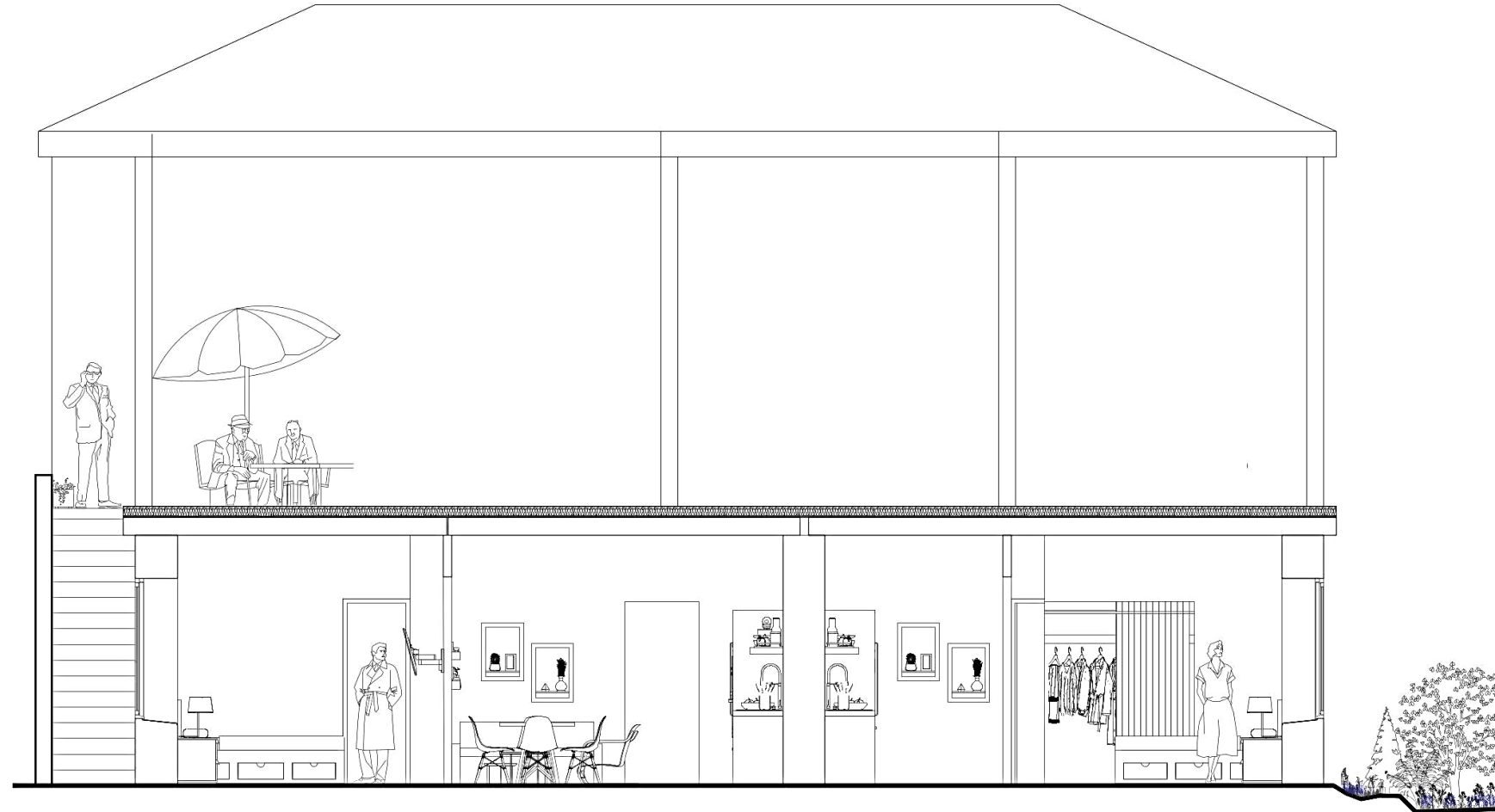
Roof detail



Section 2-Proposal



Living area(left room)

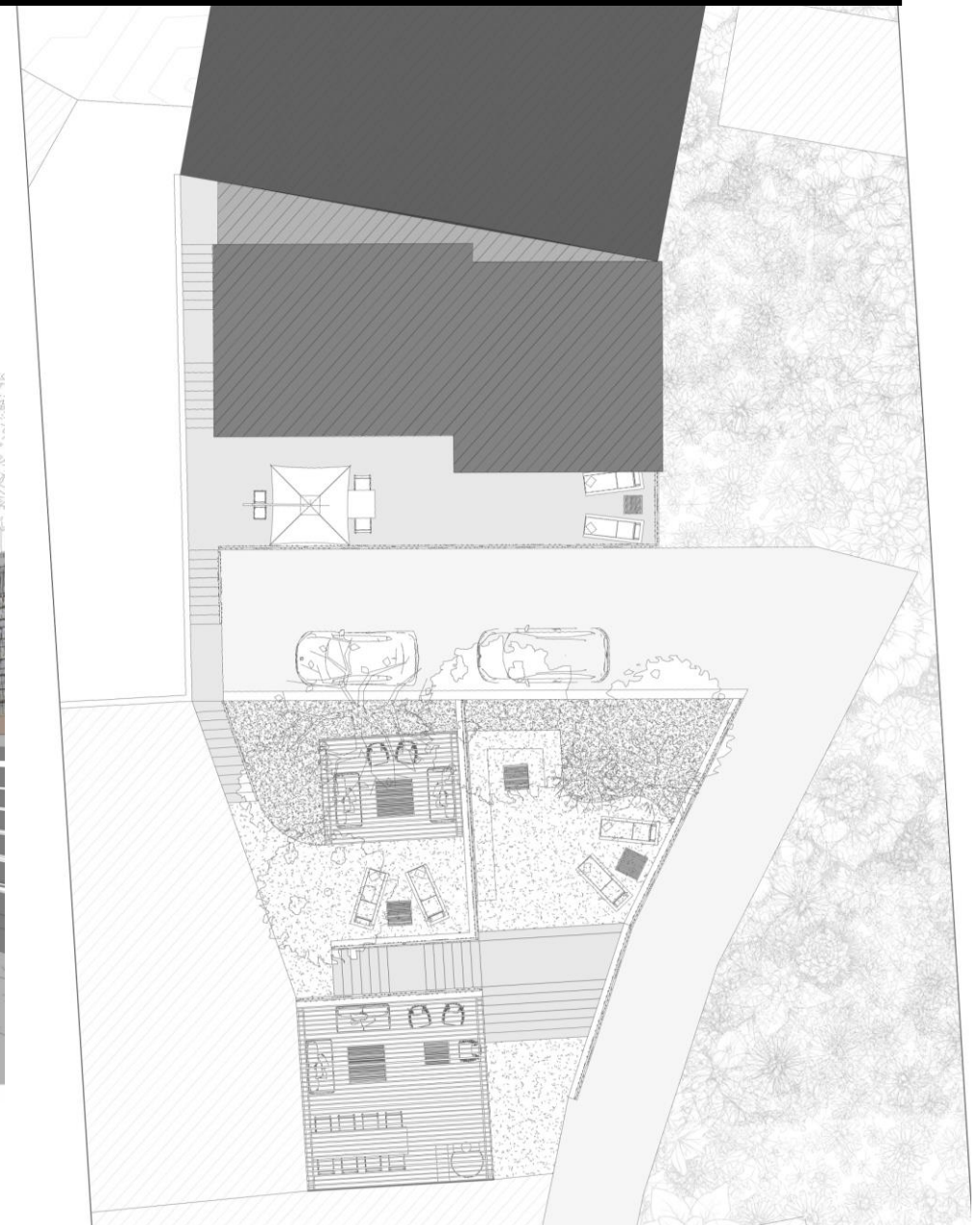


Plan masse-Proposal

- The darkest color is the contiguous house on top
- Medium dark is the renovated house with the void in between.



Oven



Plan masse-Proposal

The parking plays a role as a limit from the private(house) to the public(the oven and its gathering spaces for both the resident and the community), while having both mechanical and pedestrian access, which passes through the different public spaces.



Public gathering(around the oven)

Students : Mamadou Lamarana BAH – Enora NICOLAS – George VESSIARIS



Professor : Maria PHILOKYPROU